

PART OF THE NE 1/4 OF SEC. 18 AND PT OF THE SE 1/4 OF SEC. 7, T.6N., R.1W., S.L.B. & M.

203

BUSINESS DEPOT OGDEN PLAT 10

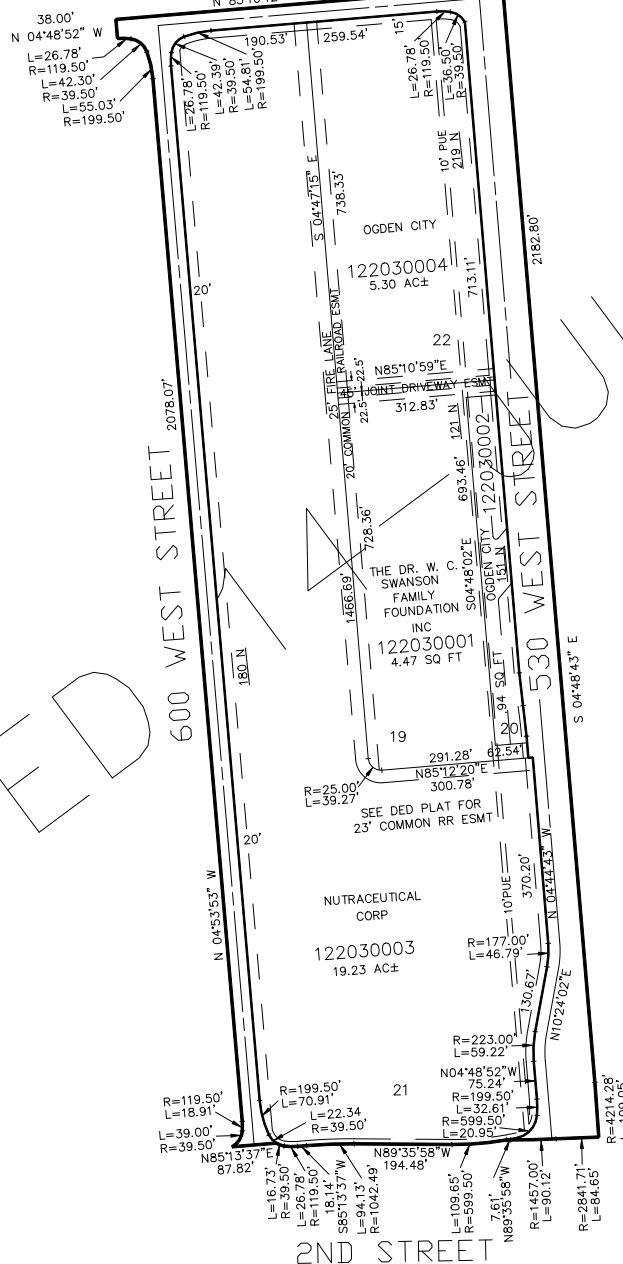
IN OGDEN CITY

TAXING UNIT: 359

SCALE 1" = 200'

SEE BOOK 11 PAGE 23

300 NORTH STREET



SEE PAGE 94

SEE PAGE 94

10' UTILITY & DRAINAGE EASEMENTS EACH SIDE OF PROPERTY LINES AS INDICATED BY DASHED LINES EXCEPT AS OTHERWISE SHOWN.

FOR COMPLETE ENG DATA SEE ORIGINAL DEDICATION PLAT IN BOOK 58, PAGE 96 OF RECORDS.

2ND STREET

SEE PAGE 94